

STANDARD ACCESSORIES

CCR-SERIES - Shielded safe series



Shielded safe suitable for the storage of radioisotope vials under complete safety conditions. Continuous lead shielding with changeable thickness. Hinged front door with key lock.

CCR-6

Frame material	INOX AISI 304 - Scotch-Brite™	
Number of internal compartment		6
Shielding (Pb)	mm	50
Weight	kg	280
External dimensions	mm	310 x 240 x 335 (w x d x h)
Internal dimensions	mm	40 x 100 x 70 (w x d x h)

CCR-25

Frame material	INOX AISI 304 - Scotch-Brite™	
Number of internal compartment		1
Shielding (Pb)	mm	25
Weight	kg	120
External dimensions	mm	315 x 265 x 285 (w x d x h)
Internal dimensions	mm	260 x 210 x 210 (w x d x h)

CCR-50

Frame material	INOX AISI 304 - Scotch-Brite™	
Number of internal compartment		1
Shielding (Pb)	mm	50
Weight	kg	280
External dimensions	mm	365 x 315 x 335 (w x d x h)
Internal dimensions	mm	260 x 210 x 210 (w x d x h)

CTF-50 - Shielded safe for activated foils and targets



Shielded safe suitable for the storage of activated foils and targets under complete safety conditions. Continuous lead shielding and hinged front door with key lock.

Frame material	INOX AISI 304 - Scotch-Brite™	
Shielding (Pb)	mm	50
Weight	kg	250
External dimensions	mm	350 x 265 x 365 (w x d x h)
Internal dimensions	mm	260 x 210 x 210 (w x d x h)

SNC-103 - Sharp needle container



This shielded container is used for storage of contaminated needles. The exterior of the container is finished with an impact proof powder coating. The container is covered with a stainless steel top lid. The lid, which covers the hole, is made of aluminium.

Shielding (Pb)	mm	3
Inside dimensions	mm	290 x 177 x 250 (w x d x h)

WC-101 - Waste container



This is a solitaire cylindrical waste container with lid.

Shielding (Pb)	mm	10
Inside Ø	mm	150
Inside high	mm	230
Weight	kg	20

CR-SERIES - Canister for radioactive waste



Equipped with a special opening that enables the lid to be lifted and translated. The system operates via an helical screw controlled by a foot pedal.

Container suitable to collect, in conditions of absolute safety, radioactive solid waste.

CR20-05

Frame Material	INOX AISI 304 - Scotch-Brite™	
Shielding (Pb)	mm	5
Weight	kg	30
Dimensions	mm	280 x 500 (Ø x h)
Capacity	l	20

CR40-03

Frame Material	INOX AISI 304 - Scotch-Brite™	
Shielding (Pb)	mm	3
Weight	kg	25
Dimensions	mm	380 x 515 (Ø x h)
Capacity	l	40

WC-300/WC-303 - Waste container



These movable containers are used for radioactive waste. It has been designed specifically to fit the standard blue plastic hospital containers. The containers are made of stainless steel. The plastic hospital container is placed inside the waste container underneath the opening. A shielded lid covers the opening. The door is lockable.

The waste container WC-303 has the lid operated by foot pedal.

Shielding (Pb)	mm	3
Inside dimensions	mm	340 x 420 x 650 (w x d x h)
External dimensions	mm	410 x 450 x 810 (w x d x h)
Weight	kg	20



STANDARD ACCESSORIES

VLS-SERIES - Mobile bed shield



These bed shields are used to protect personnel from radiation during examination of a patient. The shields are made of 2 mm lead (VLS-100: 3 mm) between two solid core plates. The plates are mounted in a stainless steel frame on 4 swivel castors (wheels). The window is made of lead acrylic glass and offers 0,8 mm lead equivalent shielding (for 110 keV).

Window material	Lead acrylic glass
Frame material	INOX AISI 304 - Scotch-Brite™

VLS-100

External dimensions	mm	1060 x 1130 (w x h)
Lead dimensions	mm	1000 x 1000 (w x h)
Shielding (Pb)	mm	3
Weight	kg	70

VLS-201

External dimensions	mm	1260 x 1600 (w x h)
Window dimensions	mm	1200 x 750 (w x h)
Lead dimensions	mm	1200 x 720 (w x h)
Shielding (Pb)	mm	2
Weight	kg	100

VLS-202

External dimensions	mm	660 x 2000 (w x h)
Window dimensions	mm	600 x 750 (w x h)
Lead dimensions	mm	600 x 1120 (w x h)
Shielding (Pb)	mm	2
Weight	kg	80

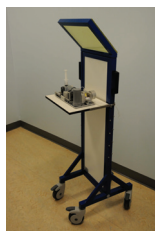
VLS-203

External dimensions	mm	810 x 2000 (w x h)
Window dimensions	mm	750 x 1200 (w x h)
Lead dimensions	mm	750 x 670 (w x h)
Shielding (Pb)	mm	2
Weight	kg	50

VLS-204

External dimensions	mm	810 x 2000 (w x h)
Window dimensions	mm	750 x 600 (w x h)
Lead dimensions	mm	750 x 1270 (w x h)
Shielding (Pb)	mm	2
Weight	kg	90

VLS-PET - Mobile PET leadshield



This movable bed shield is used to protect personnel from radiation during injection of PET isotopes and examination of the patient. Due to the small size of this shield, contact with the patient is not inhibited. This is seen as a mayor advantage. The shield can be used in the application and gamma camera room as well. Two handles are integrated on the sides for easy manipulation of the shield. The angled leadglass window is mounted on top of the shield. At the patient side a small height adjustable 400 x 300 mm (w x d) shelf is mounted which can carry a weight of approx. 10 kg.

Width	mm	400
Height	mm	1500
Leadshielding	mm	15
Dimensions leadglass window	mm	400 x 280 (w x h)
Shielding window (eq. Pb)	mm	10
Total weight	kg	approx. 120

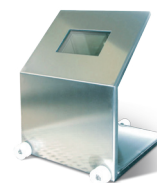
OLK-101 - Lead brick enclosure



This enclosure is constructed of interlocking euro norm lead bricks, eliminating radiation leakage. The OLK offers a lead shielding of 50 mm to all sides. Optionally the OLK can be fitted with a bottom shield of 10 or 30 mm Pb. The enclosure is fitted with a stainless steel tray for easy decontamination.

Shielding (Pb)	mm	50
Construction material		Lead

BMI-SERIES - Sliding protection for benches



Stainless steel sliding protection with lead shielding and shielded glass window.

Frame Material	INOX AISI 304 - Scotch-Brite™	
Stainless steel thickness	mm	1,5
External dimensions	mm	350 x 350 x 490 (w x d x h)
Glass dimensions	mm	180 x 120 (w x h)

BMI-10

Shielding (Pb)	mm	10
Weight	kg	45

BMI-30

Shielding (Pb)	mm	30
Weight	kg	130

BMI-50

Shielding (Pb)	mm	50
Weight	kg	175

LKV-SERIES - Lead glass barrier



Internal dimensions	mm	400 x 400 x 300 (w x d x h)
External dimensions	mm	500 x 500 x 340 (w x d x h)
Construction material	mm	Lead glass
Coating	INOX AISI 304 - Scotch-Brite™	
Shielded glass window dimensions	mm	250 x 200 (w x h)
Shielding (Pb)	LKV-10	10 mm
	LKV-30	30 mm
	LKV-50	50 mm



COMECER S.p.A. Via Maestri del Lavoro 90
48014 Castel Bolognese (RA) Italy T +39 0546 656375 F +39 0546 656353
comecer@comecer.com www.comecer.com

Part of COMECERGROUP



STANDARD ACCESSORIES

LGH-SERIES - Lead glass syringe shield



Syringe shields made of Hi-D lead glass with 360-degree visibility. The lead glass syringe shield has a lead equivalent of 1,5 mm.

Construction material		Hi-D lead glass
Lead thickness equivalent	mm	1,5

LGH-1 (for 1 ml syringe)

Length	mm	75
Internal ø	mm	8,5

LGH-2 (for 2 ml syringe)

Length	mm	52
Internal ø	mm	11,5

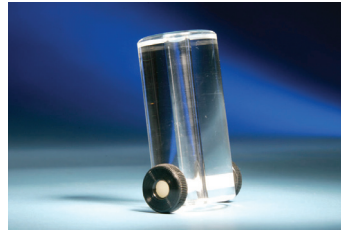
LGH-2.5 (for 2.5 ml syringe)

Length	mm	58
Internal ø	mm	11,5

LGH-3 (for 3 ml syringe)

Length	mm	67
Internal ø	mm	11,5

PH-SERIES - Perspex syringe shield



Perspex syringe shields for the shielding of beta radiation. The syringe is polished on the inside to guarantee a clear view on the syringe. The syringe is fixed with 2 Teflon screws. The syringe shields will be made to fit the syringe models you are using.

Thickness		10 mm minimum
Construction material		Perspex
Syringe capacity	PH-1	1 ml
	PH-2	2 ml
	PH-5	5 ml
	PH-10	10 ml

WS-SERIES - Tungsten syringe shield



This is a compact syringe shield without a lead glass window, for 511 keV applications. The finger dose is reduced by a factor 40.

Construction material		Tungsten
Shielding (W)	mm	7

WS-2 (for 2 ml syringe)

Length	mm	55
Inside Ø	mm	11,4

WS-3 (for 3 ml syringe)

Length	mm	66
Inside Ø	mm	11,4

WS-5 (for 5 ml syringe)

Length	mm	66
Inside Ø	mm	14,4

WS-10 (for 10 ml syringe)

Length	mm	70
Inside Ø	mm	33

PST-SERIES - Tungsten shielding for syringes



Tungsten shield for syringes, equipped with an ergonomic notch in the central part in order to make the syringe handling easier.

Construction material		4 ÷ 7
Shielding (W)	mm	13.9 x 51 (d x h)

PST-5 (for 5 ml syringe)

Pit dimensions	mm	13.9 x 51 (d x h)
External dimensions	mm	27.5 x 60 (d x h)
Total weight	kg	0.383
Syringe capacity	ml	5

PST-10 (for 10 ml syringe)

Pit dimensions	mm	16.5 x 76 (lØ x h)
External dimensions	mm	33 x 85 (Ø x h)
Total weight	kg	0.645
Syringe capacity	ml	10



STANDARD ACCESSORIES

BHT-SERIES - Tungsten syringe shield



This is a compact syringe shield with a lead glass window and clamp lock. The lead glass is completely encapsulated in tungsten material. For this reason radiation leakage is not possible. The interior of the shield is coloured white for clear visibility. The shields offer a shielding of 2-mm tungsten.

Construction material		Tungsten
Shielding (W)	mm	2

BHT-1-72 (for 1 ml syringe)

Length	mm	72
Internal ø	mm	8.8
External ø	mm	12.4

BHT-1-77 (for 1 ml syringe)

Length	mm	77
Internal ø	mm	8.8
External ø	mm	12.4

BHT-1-75 (for B&D luer lock 1 ml syringe)

Length	mm	75
Internal ø	mm	11.5
External ø	mm	16.6

BHT-2-53 (for 2 ml syringe)

Length	mm	53
Internal ø	mm	11.5
External ø	mm	16

BHT-2-59 (for 2 ml syringe)

Length	mm	59
Internal ø	mm	11.5
External ø	mm	16

BHT-3-65 (for 3 ml syringe)

Length	mm	65
Internal ø	mm	11.5
External ø	mm	16

BHT-3-68 (for 3 ml syringe)

Length	mm	68
Internal ø	mm	11.5
External ø	mm	16

BHT-5-60 (for 5 ml syringe)

Length	mm	60
Internal ø	mm	15.4
External ø	mm	20

BHT-5-65 (for 5 ml syringe)

Length	mm	65
Internal ø	mm	15.4
External ø	mm	20

BHT-5-68 (for 5 ml syringe)

Length	mm	68
Internal ø	mm	15.4
External ø	mm	20

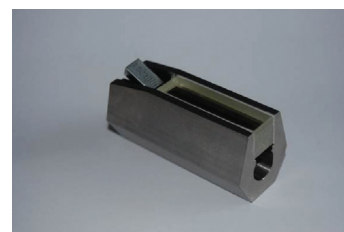
BHT-10-75 (for 10 ml syringe)

Length	mm	75
Internal ø	mm	18.2
External ø	mm	22.5

BHT-10-85 (for 10 ml syringe)

Length	mm	85
Internal ø	mm	18.2
External ø	mm	22.5

BHP-SERIES - Uni-lock tungsten PET syringe shields



NEW 511 Kev tungsten syringe shield for use with PET isotopes with a lead glass window. The shield is fitted with the popular Unilock® locking mechanism. The lead glass window is 11-13 mm thick offering 3-4 mm Pb equivalent shielding. The new hexagon body shape helps to prevent the syringe shield from rolling when left on a table and because of the design the shield can be rested at an angle using the three lower surfaces.

Construction material		Tungsten
Shielding (W)	mm	7.8

BHP-1 (for 1 ml syringe)

Length	mm	77
Internal ø	mm	8.5

BHP-1 (for 1 ml Luer Lock syringe)

Length	mm	77
Internal ø	mm	12

BHP-2/3 (for 2 ml and 3 ml syringe)

Length	mm	60
Internal ø	mm	12

BHP-5 (for 5 ml syringe)

Length	mm	66
Internal ø	mm	16

BHP-10 (for 10 ml syringe)

Length	mm	85
Internal ø	mm	18



COMECER S.p.A. Via Maestri del Lavoro 90
48014 Castel Bolognese (RA) Italy T +39 0546 656375 F +39 0546 656353
comecer@comecer.com www.comecer.com

Part of COMECERGROUP

